

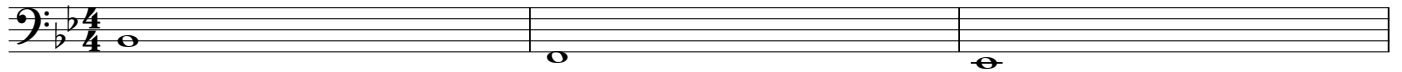
# Daily Warm-ups

Tuba

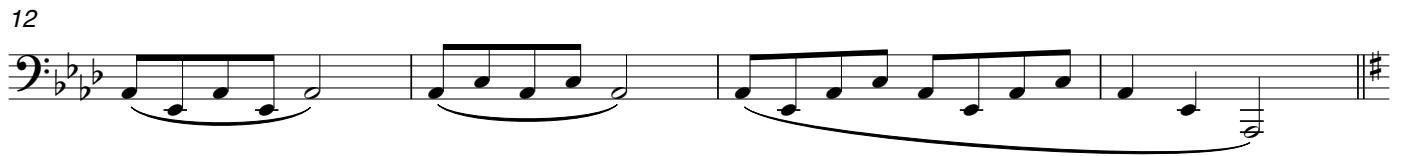
Concert Bb

Concert F

Concert Eb



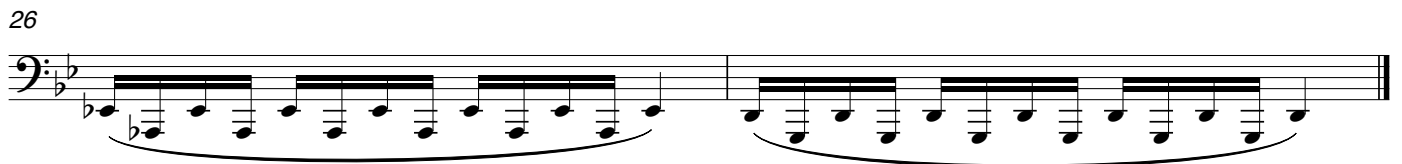
#1



#2



#3



#4



#5



40 (#6)

Musical staff for exercise #6, measures 40-45. The staff is in bass clef with a key signature of one flat (B-flat). The exercise consists of eighth-note patterns. Measures 40-41 show a descending eighth-note scale. Measures 42-43 show an ascending eighth-note scale. Measures 44-45 show a descending eighth-note scale with a fermata over the final note.

46

Musical staff for exercise #6, measures 46-49. The staff is in bass clef with a key signature of one flat. The exercise consists of eighth-note patterns. Measures 46-47 show a descending eighth-note scale. Measures 48-49 show an ascending eighth-note scale with a fermata over the final note.

50

Musical staff for exercise #6, measures 50-52. The staff is in bass clef with a key signature of one flat. The exercise consists of eighth-note patterns. Measures 50-51 show a descending eighth-note scale. Measure 52 shows an ascending eighth-note scale with a fermata over the final note.

53 (#7)

Musical staff for exercise #7, measures 53-56. The staff is in bass clef with a key signature of one flat. The exercise consists of quarter-note patterns. Measures 53-54 show a descending quarter-note scale. Measures 55-56 show an ascending quarter-note scale with a fermata over the final note.

57

Musical staff for exercise #7, measures 57-61. The staff is in bass clef with a key signature of one flat. The exercise consists of quarter-note patterns. Measures 57-58 show a descending quarter-note scale. Measures 59-60 show an ascending quarter-note scale. Measure 61 shows a descending quarter-note scale with a fermata over the final note.

62 (#8)

Musical staff for exercise #8, measures 62-65. The staff is in bass clef with a key signature of one flat. The exercise consists of sixteenth-note patterns. Measures 62-63 show a descending sixteenth-note scale. Measures 64-65 show an ascending sixteenth-note scale with a fermata over the final note.

#9

66 On All Notes of a Scale

Musical staff for exercise #9, measures 66-71. The staff is in bass clef with a key signature of one flat. The exercise consists of quarter-note patterns. Measures 66-71 show a descending quarter-note scale with a fermata over the final note.

#10

68 On All Scales

Musical staff for exercise #10, measures 68-73. The staff is in bass clef with a key signature of one flat. The exercise consists of quarter-note patterns. Measures 68-73 show a descending quarter-note scale with a fermata over the final note.